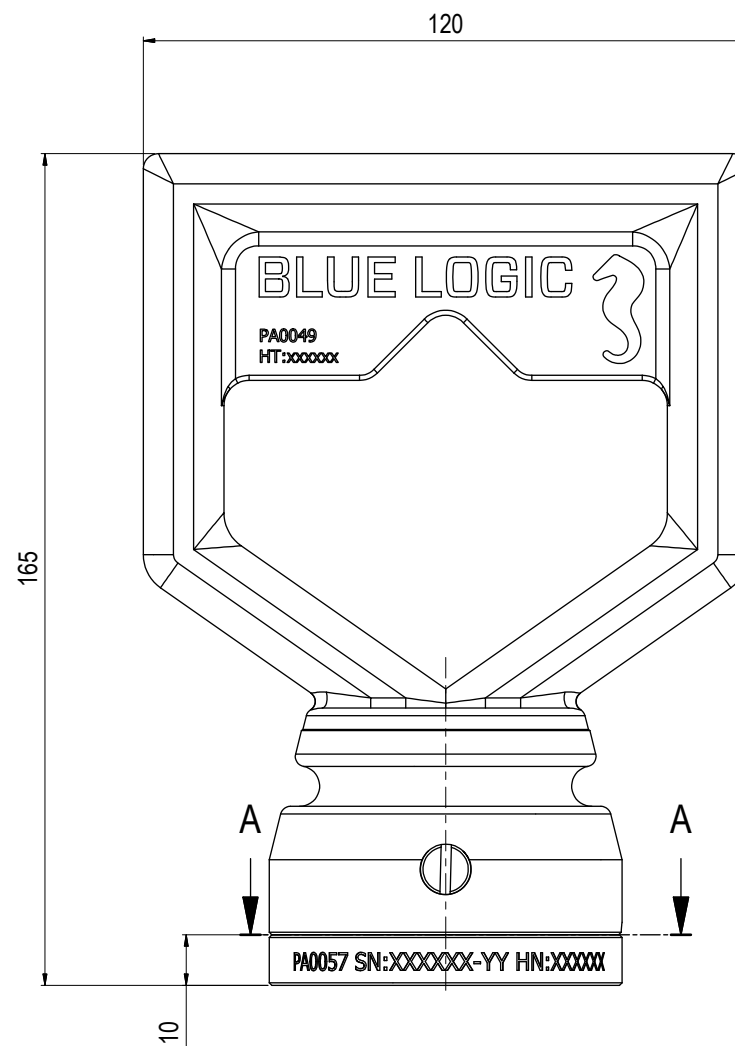
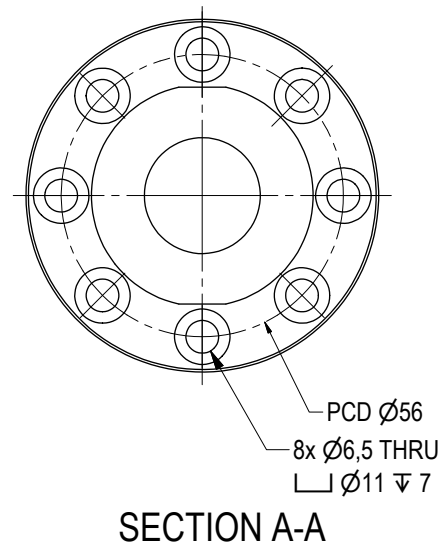
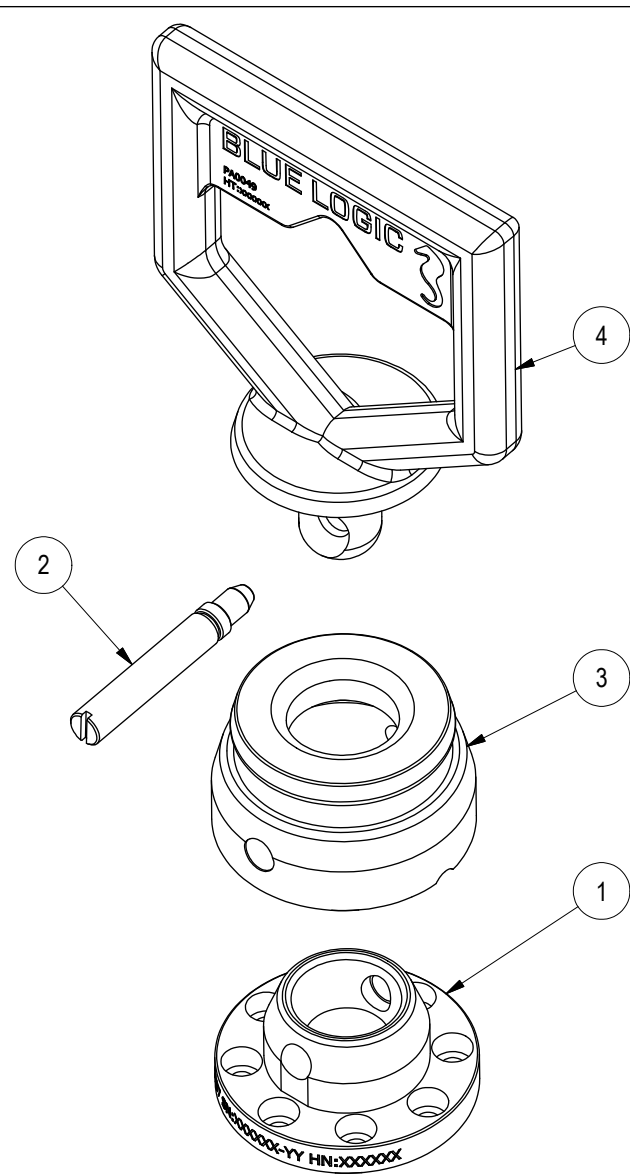
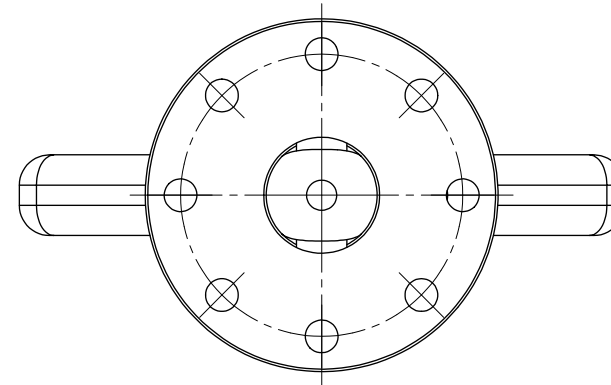
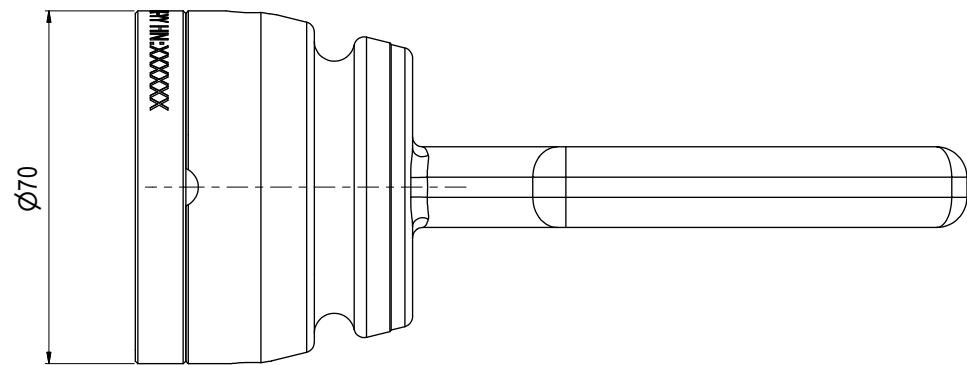


Parts List				
ITEM	QTY	PART No.	DESCRIPTION	WEBLINK
1	1	PA0057	Flex-Joint Base With PDC Ø56mm	http://e-sea.bluelogic.no/main.aspx?page=article&artno=PA0057
2	1	PA0051	Lock Bolt For Flex Handle	http://e-sea.bluelogic.no/main.aspx?page=article&artno=PA0051
3	1	PA0050	Flex Element	http://e-sea.bluelogic.no/main.aspx?page=article&artno=PA0050
4	1	PA0049	D-Handle	http://e-sea.bluelogic.no/main.aspx?page=article&artno=PA0049



For assembly info see NOTE 4

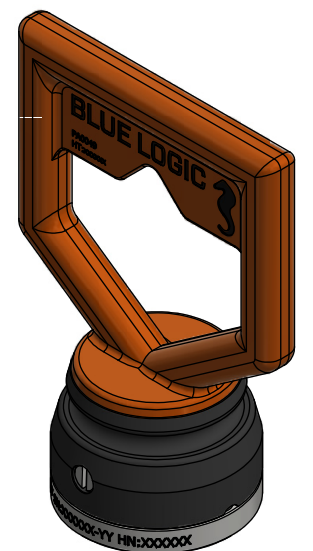
NOTE: 1
DESIGN CODE:
N/A

NOTE: 2
TECHNICAL CLASSIFICATION:
Article Type: 002-ROV Handles
Main Group: 2.01. Stab-Handle
Intermediate Group: 2.7.02. D-Handle
Sub Group: 2.7.47.01. Intervention

NOTE: 3
INTERFACE INFORMATION:
Pressure Rating Bar: N/A
Design Water Depth: N/A
Material: N/A
Weight in Air: 1,4 kg
Volume: 0,25 dm³
Submerged Weight: 1,15 kg
Surface Area: 681 cm²
Hydraulic: N/A
Mechanical: N/A
Electrical: N/A
Com. & Protocol: N/A

NOTE: 4
INTERNAL FAB/ASSY INFO:
When assembled, there is tension between the D-Handle and the Flex Joint Base. The D-Handle need to be pre-loaded against the Flex Joint base to ease lock bolt installation. By use of a vice or hydraulic press, press the D-Handle towards the Flex Joint base, to ease Lock Bolt mounting. Lubricate the Lock Bolt with soap or oil to decrease the friction between the Lock Bolt and rubber Flex Joint.

Max Torque: 300Nm
Max Axial Pull Force: 12000N
Max Horizontal Force on Outer Edge: 5000N



Rev.	Date	Reason for issue	Revision change	Made	Chk'd	Appr.
02	19.5.2014	8-ASB (As-Built)	New view for Interface	WTJ	HNJ	WTJ
01	4.10.2011	8-ASB (As-Built)		LGH	HNJ	LGH



Dwg Scale: NTS
Dwg Proj:
Dwg Format: A3

Drawing title:
Assy D-Handle

Drawing number:
BA1959

Rev
02